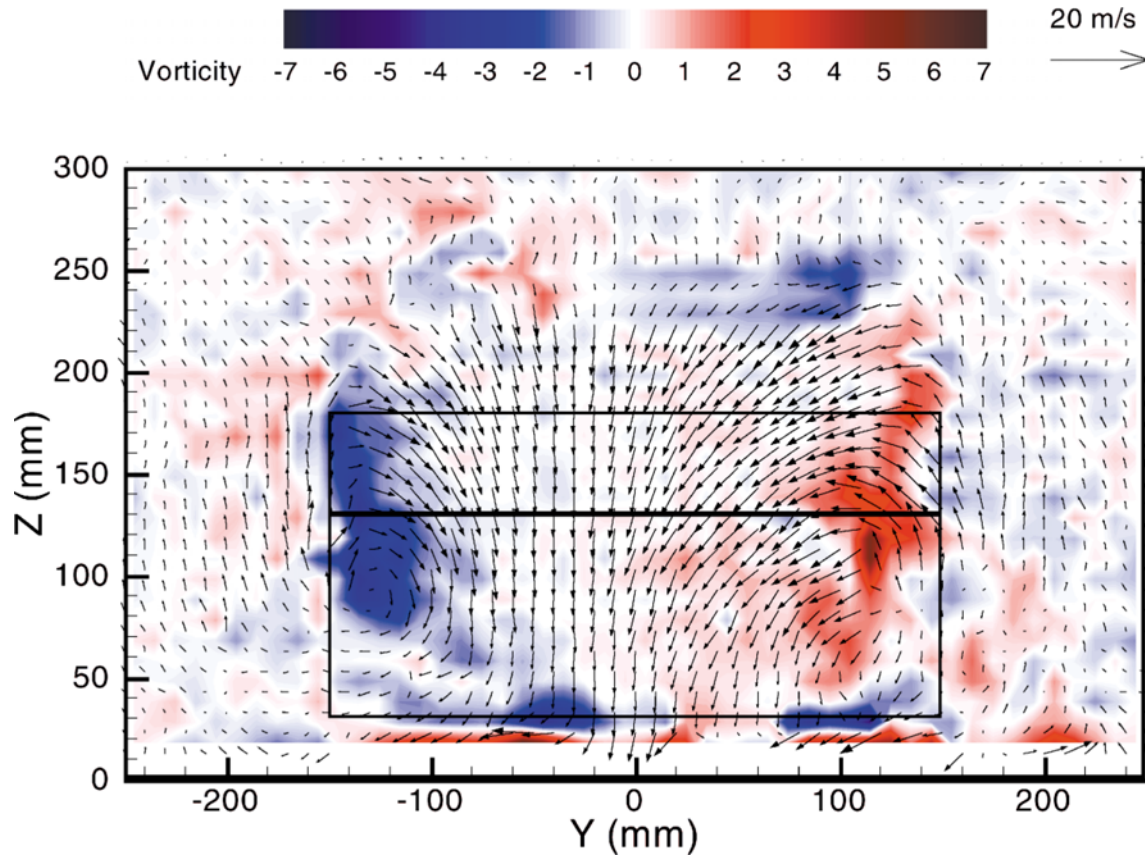


Velocity Vectors and Vorticity Contours behind a Hatchback Car in a Plane Normal to the Mean Flow/Car Motion Vector

Grant, I.¹⁾, McCutcheon, G.¹⁾, McColgen, A.¹⁾ and Hurst, D.²⁾

1) *Fluid Loading and Instrumentation Centre, Heriot-Watt University, Edinburgh, Scotland, UK*

2) *Department of Aerospace Engineering, University of Glasgow, Glasgow, Scotland, UK*



The figure shows vorticity contours and corresponding interpolated velocity vectors for a hatchback car measured in a plane normal to the mean flow. The data was collected at a wake survey plane 2.5 car heights behind the 'hatch'. The measurements show the instantaneous wake is not symmetric and is dominated by two time-dependent, counter rotating, primary, trailing vortices. The data was processed using custom software designed to compensate for through sheet motion and viewing angle.